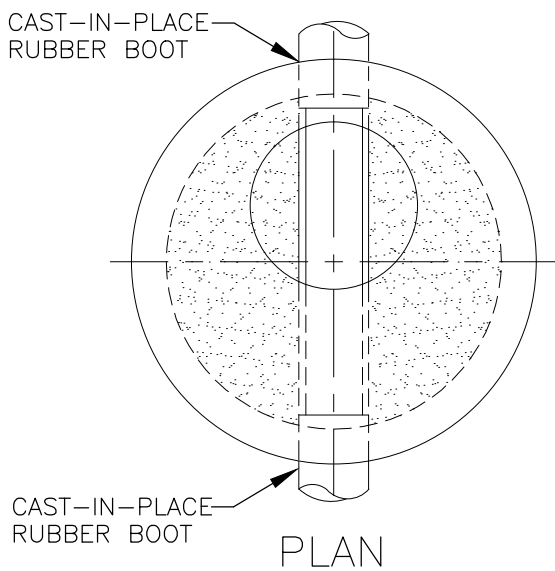


SECTION



PLAN

GENERAL NOTES:

1. TYPE 1 FRAME & LID NEENAH NO.R-1712-B WITH CONCEALED PICKHOLE OR APPROVED EQUAL.
2. IF FLOW IS $\geq 25,000$ G.P.D. A PALMER BOWLUS FLUME OR AN APPROVED EQUAL WILL BE REQ'D IN LIEU OF MOULDED INVERT. FLUME SHALL BE MOULDED IN PLACE.
3. BITUMASTIC SEALANT TO BE APPLIED ACROSS FRAME/CHIMNEY JOINT AND BETWEEN CONCRETE RINGS.
4. THE SAMPLING MANHOLE SHALL BE LOCATED ON SEWER CONNECTION PIPE AT A POINT WHERE THERE ARE NO CHANGES IN GRADE OR ALIGNMENT FOR AT LEAST 15 PIPE DIAMETERS UPSTREAM AND DOWNSTREAM FROM THE MANHOLE. THE GRADE (SLOPE) OF THE PIPE SHALL NOT EXCEED 1% (1 FOOT PER 100 FEET) THROUGH THE MANHOLE AND FOR DISTANCE OF 15 PIPE DIAMETERS UPSTREAM AND DOWNSTREAM FROM THE MANHOLE.

NORTH SHORE WATER RECLAMATION DISTRICT
SAMPLING MANHOLE

SCALE 1/2"=1'-0"

REVISED 8-28-91